

Honda GXV160 N1F1 Vertical Shaft Engine

Prod Code: 3000-HOND-21191

Vertical Shaft Recoil Start Oil Alert Petrol Engine. Dumper application type (NOW GXV160UH2-N1-XF)

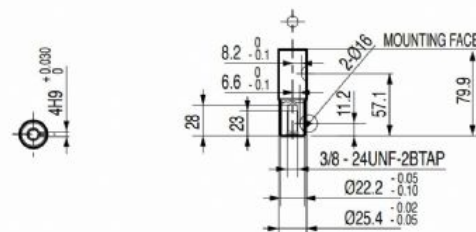
The GXV160 engine is suitable for a wide range of heavy-duty applications such as riding mowers, sweepers, construction equipment and other industrial applications.

Engine features:

- The OHV design enhances combustion efficiency
- High power-to-displacement ratio
- Easy starting with an automatic decompression system
- Low vibration and noise level
- High quality materials and purpose-built components ensure reliable long-term use
- Exceeds European exhaust emission legislation
- Low fuel and oil consumption

SPECIFICATIONS

Engine Type	Single cylinder OHV 4-stroke vertical shaft air-cooled
Recoil Start	Yes
Electric Start	No
Max. Net Torque (Nm) @ 2'500 rpm	9.6
Displacement (cc)	163
Cylinder	Cast Iron Sleeve
Bore (mm)	68.0
Stroke (mm)	45.0
Fuel Tank Capacity (l)	1.4
Oil Capacity (l)	1.1
Dry Weight (kg)	15.5
Dimensions Length (mm)	420
Dimensions Width (mm)	365
Dimensions Height (mm)	357



N1-TYPE



www.geargb.co.uk
01429 269757